

# DULCES

Chic matt colours,  
Fresh & vibrant translucents,  
Earthy organic clays.

Made in Spain



*Dilorenzo*

## PRODUCT DETAILS

Dulces Coral Gloss (cover), Dulces Turques Gloss (this page)

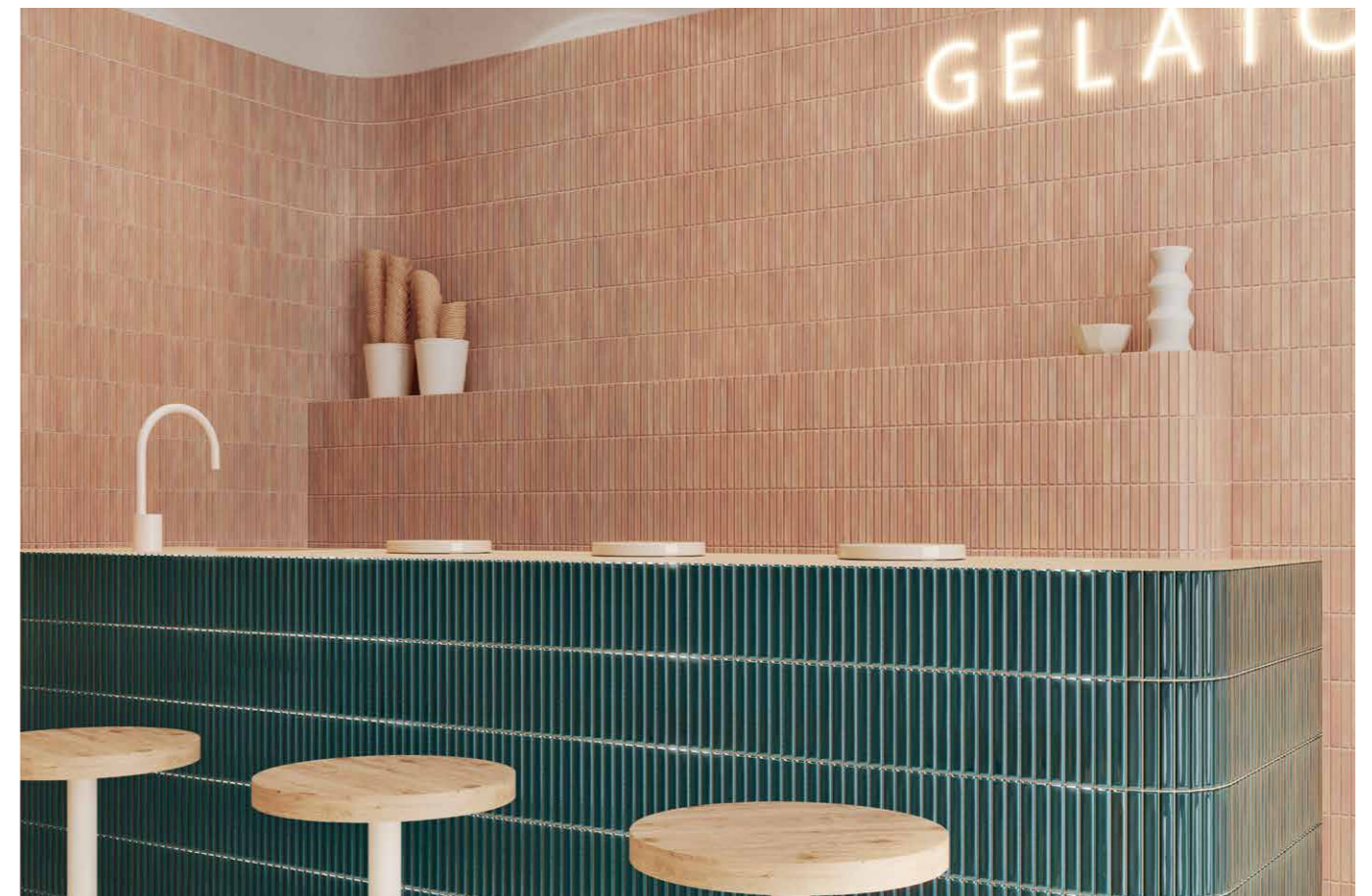


## DULCES

dilorenzo.com.au

Dulces is a collection of porcelain and ceramic tiles, available in a matt, gloss and translucent glaze.

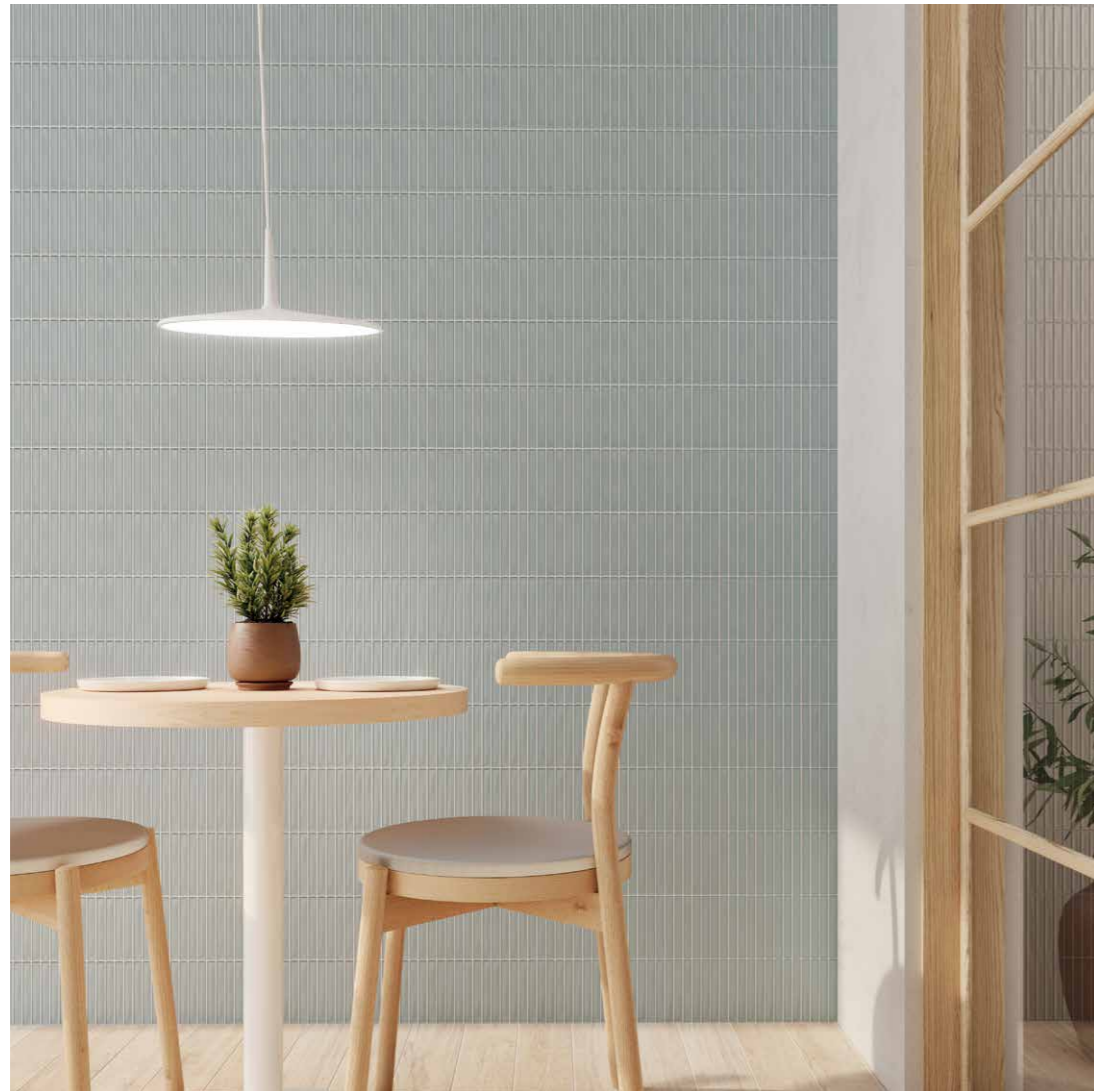
The collection consists of 23 colours, and each tile is scored, allowing grout to be filled into these joints. Once grouted this gives the impression these tiles are mosaics, allowing for easy maintenance and installation. Made in Spain.



## PRODUCT DETAILS

Dulces Teal Gloss, Dulces Tan Matt

*Dilorenzo*



**PRODUCT DETAILS**

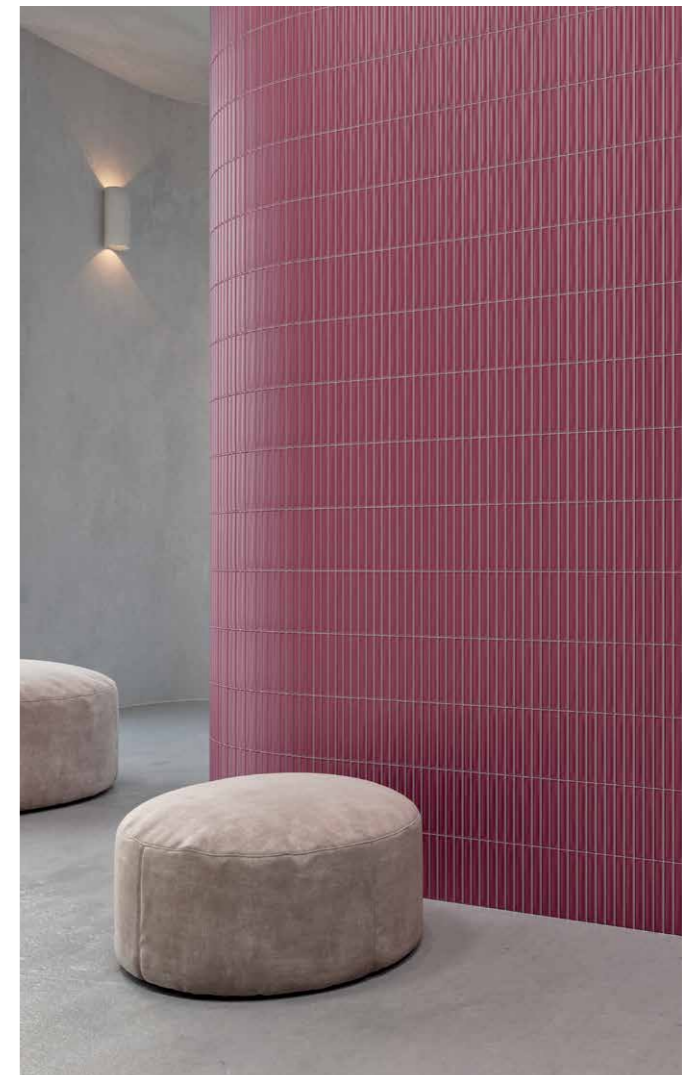
Dulces Grey Matt

**DULCES**

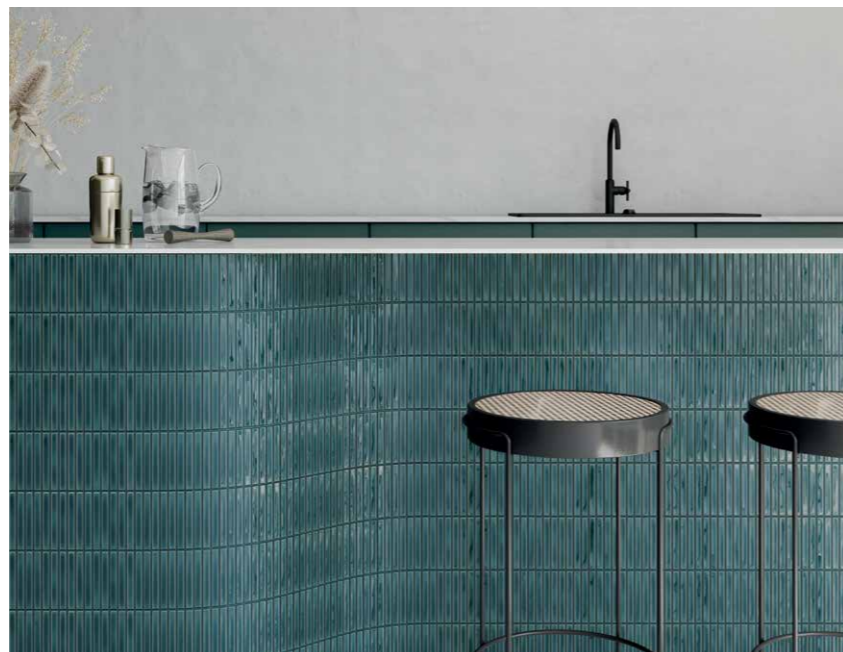
dilorenzo.com.au

**PRODUCT DETAILS**

Dulces Mineral Grey Gloss (left), Dulces Berry Matt (right)



*Dilorenzo*



**PRODUCT DETAILS**

Dulces Grey Matt, Dulces White Matt  
(top)

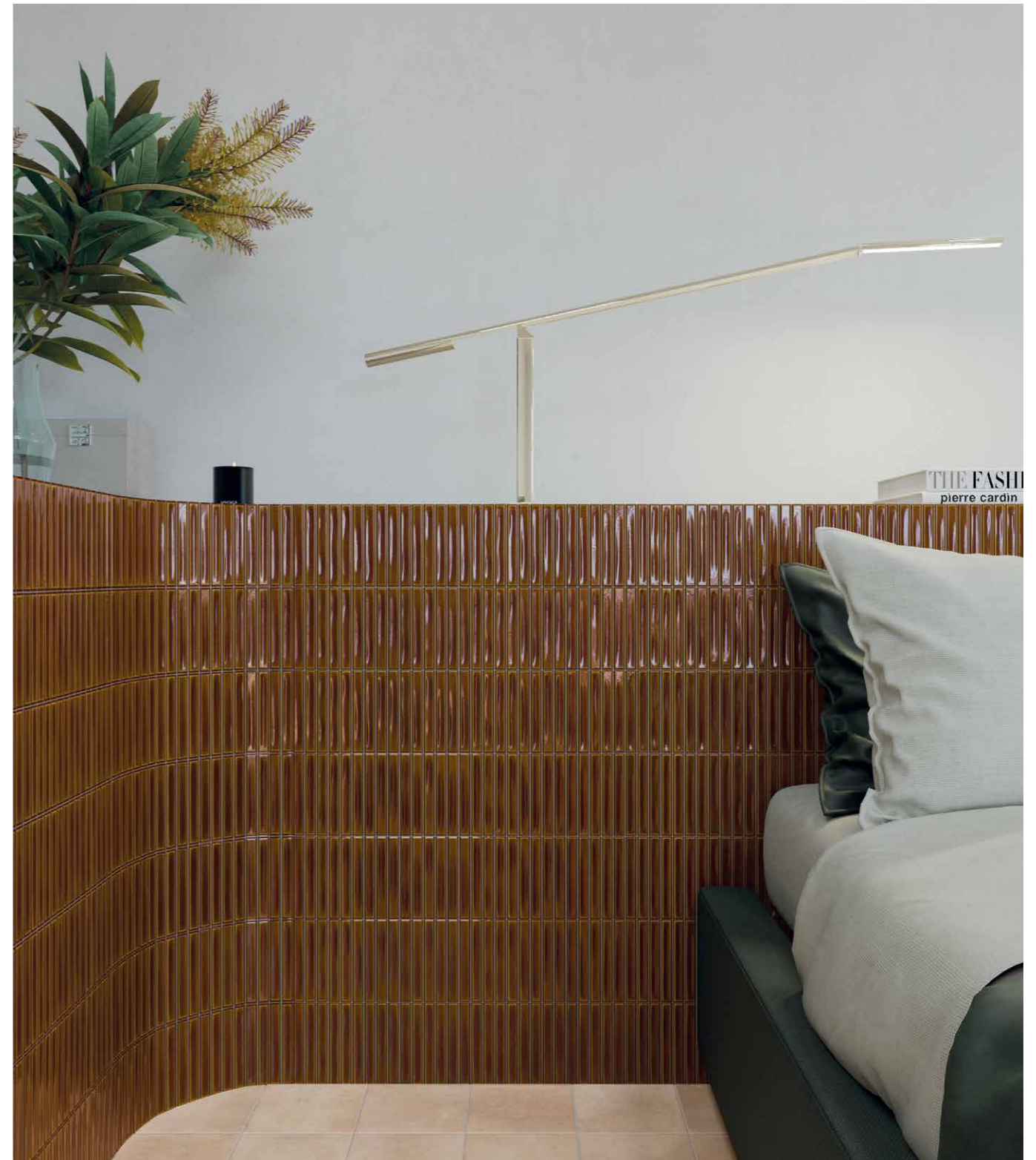
Dulces Peacock Blue (bottom)

**DULCES**

dilorenzo.com.au

**PRODUCT DETAILS**

Dulces Honey Gloss



*Dilorenzo*



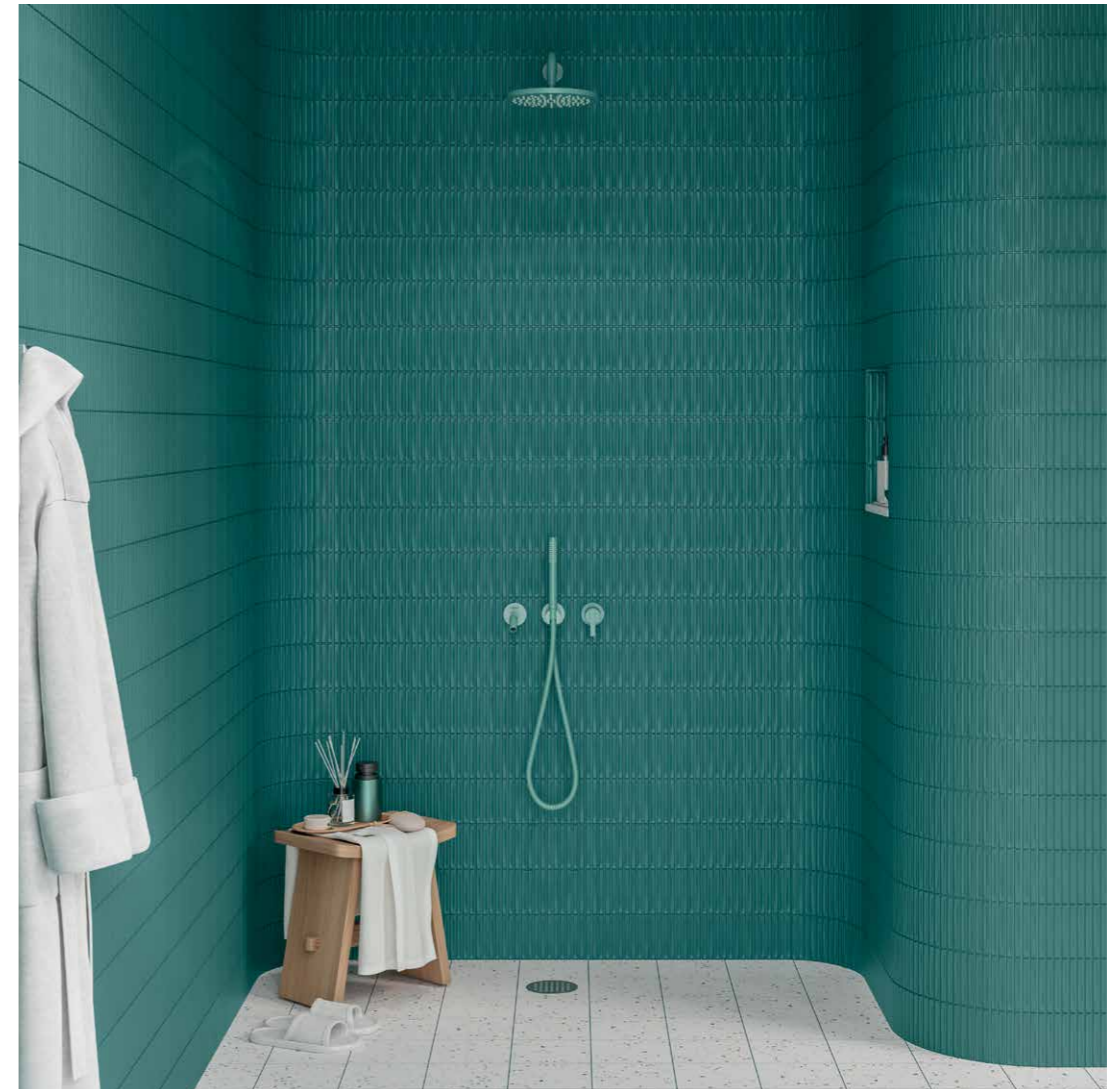
**PRODUCT DETAILS**

Dulces Fern Gloss (top)

Dulces White Gloss (bottom)

**DULCES**

dilorenzo.com.au



**PRODUCT DETAILS**

Dulces Teal Matt

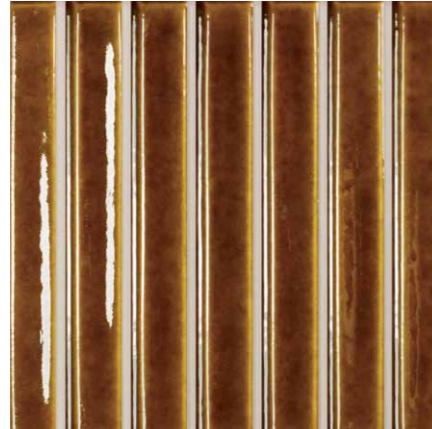


AVAILABLE COLOURS

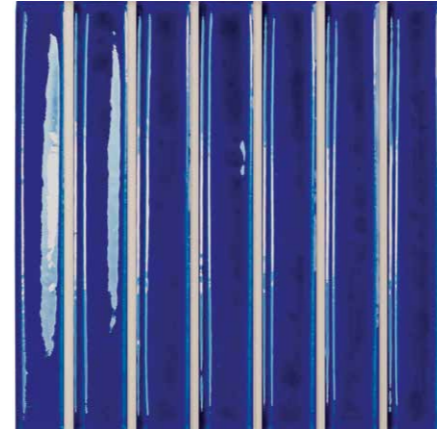
Porcelain



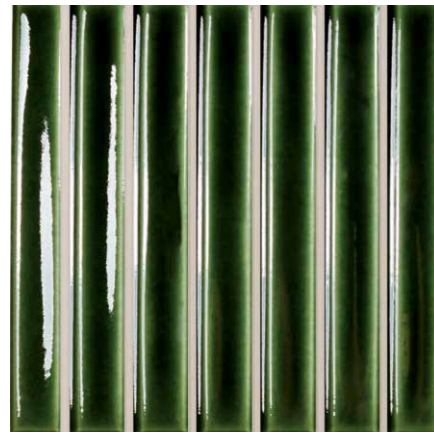
Biscuit



Honey



Indigo



Olive



Teal



Tan



Turques



White

DULCES

dilorenzo.com.au

AVAILABLE COLOURS

Ceramic



Berry



Blush



Coral



Deep White



Ebony



Fern



Grey



Greige



Mineral Grey



Peacock



Royal Green



Sage



Sand



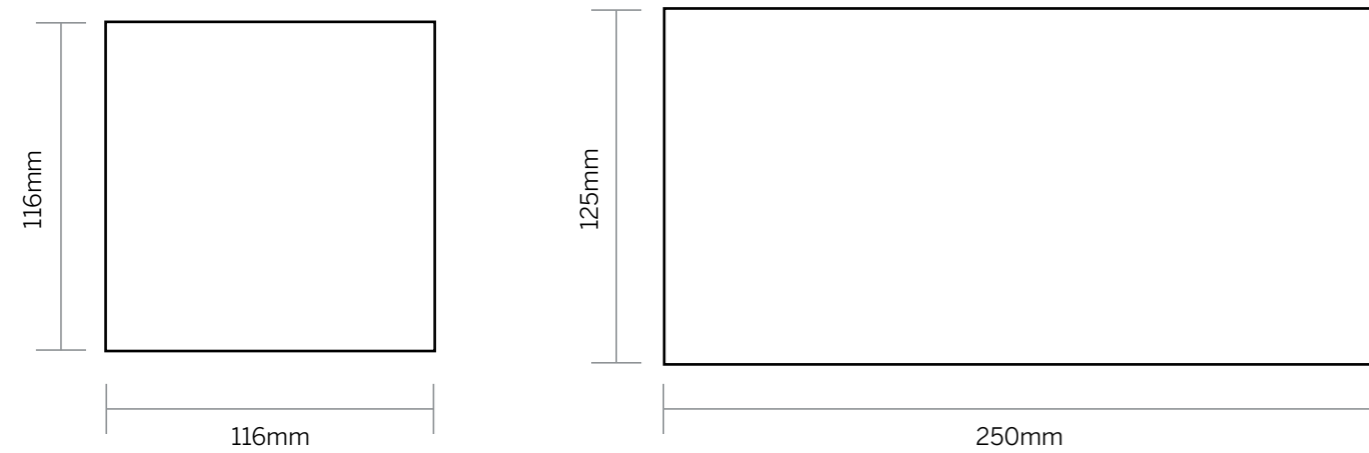
Teal



White



SIZE CHART



SIZE (MM)	THICKNESS (MM)	FINISH	COLOURS	MATERIAL
116 x 116	8.5	Gloss/Polished	White Turques Honey Olive Teal Indigo	Porcelain
116 x 116	8.5	Matt/Naturale	Biscuit Tan	Porcelain
125 x 250	8.5	Gloss/Polished	Mineral Grey Coral Fern Royal Green Peacock Ebony	Ceramic
125 x 250	8.5	Matt/Naturale	White Sand Grey Blush Sage Teal Berry	Ceramic

WARNING!

The size of the piece may vary depending on the colour.  
We do not recommend using compositions that mix different colours.



DULCES

dilorenzo.com.au



PRODUCT DETAILS

Dulces Royal Green Gloss



## RECOMMENDATIONS

### WAREHOUSING

In order to guarantee the characteristics of the finish the product must be kept in its original packaging until the time of fixing. If the product is likely to be stored for a long period of time it should be suitably covered.

### TILE FIXING

To ensure the products adhere correctly to the surface, it is essential to use specific adhesive and grouting material. This must also be suitable for the environment they will have to withstand. Fitting with traditional mortars does not ensure good adhesion.

Due to the nature of the material there may be dimensional variations between pieces. Therefore, all types of joints must be planned and carried out correctly: structural, perimeter, expansion and installation joints. Fitting tiles without joints is not advisable from any technical point of view as this may lead to various problems.

For an optimal result that enhances the mosaic effect, we recommend using 1,5 mm (0.06") of joint, as well as a joint color that contrasts with the tone of the piece.

We do not recommend using a grout color similar to the piece.

### MAINTENANCE AND CLEANING

Once the materials have been fitted, it is advisable to remove any remaining adhesive and grouting material by using a commercial descaling product designed especially, diluted with water. The descaling product must not remain in contact with the surface to be cleaned for more than 5 minutes.

As a general guideline, powder detergents should not be used, not wire wool or abrasive materials. Generally a sponge will be sufficient with warm water and liquid neutral soap. Then rinse with plenty of clean water.

### WARNING!

Due to the glaze specifications of colours: SB Turques Gloss, SB Honey Gloss, SB Olive Gloss, SB Teal Gloss and SB Indigo Gloss; It is strongly recommended to avoid using these products on kitchen countertops or any other surface where the tiles might be in contact with food.

# DULCES

dilorenzo.com.au

## TECHNICAL FEATURES

<b>Porcelain tiles with water absorption B la ≤ 0,5% for interior and exterior floors and walls.</b> Baldosas cerámicas prensadas en seco con absorción de agua B la ≤ 0,5% para suelos y paredes interiores y exteriores.			
FEATURES / CARACTERÍSTICAS	SPECIFICATION / ESPECIFICACIÓN	NORMA	
Dimensional Features	116 mm +/- 0,6% x 116 mm +/- 0,6%	UNE-EN ISO 10545-2:1998	
Water absorption	≤ 0,5%	UNE-EN ISO 10545-3:1997	
Modulus of rupture and breaking strength	Minimum 35 N/mm <sup>2</sup> Individual Minimum 32 N/mm <sup>2</sup>	UNE-EN ISO 10545-4:2012	
Crazing resistance	Pass	UNE-EN ISO 10545-11:1997	
Household products resistance	GA	UNE-EN ISO 10545-13:1998	
Chemical resistance	GHA (Matt & White Gloss) GLB (Gloss) GHB (Gloss)	UNE-EN ISO 10545-13:1998	
Stain resistance	5	UNE-EN ISO 10545-14:1998	
Porcelain Body	-		

<b>Technical features for Dry-Pressed ceramic tiles with water absorption BIII (Eb &gt;10%)</b> Características técnicas para las baldosas cerámicas prensadas en seco del grupo BIII (Eb >10%)			
FEATURES / CARACTERÍSTICAS	SPECIFICATION / ESPECIFICACIÓN	NORMA	
Dimensional Features	125 mm +/- 0,75 mm x 250 mm +/- 0,75mm	UNE-EN ISO 10545-2:1998	
Water absorption	> 10%	UNE-EN ISO 10545-3:1997	
Modulus of rupture and breaking strength	Thickness ≥ 7,5 mm mínimo 12 N/mm <sup>2</sup> Thickness < 7,5 mm mínimo 15 N/mm <sup>2</sup>	UNE-EN ISO 10545-4:2012	
Crazing resistance	Pass	UNE-EN ISO 10545-11:1997	
Household products resistance	GA	UNE-EN ISO 10545-13:1998	
Chemical resistance	GHA	UNE-EN ISO 10545-13:1998	
Stain resistance	5	UNE-EN ISO 10545-14:1998	
White Body	-		





*Dilorenzo*  
TILE MERCHANTS

## PRODUCT DETAILS

Dulces Sage Matt

# CONTACT

For more inspiration, or to request a product sample, visit us online or at one of our showrooms.

[dilorenzo.com.au](https://dilorenzo.com.au)